

Volvo L35B-Z



Volvo L35B-Z

S/N: 01864112

Year: 2008

Hours: 7600

Ref.no: 118318

Weight: 7200kg

Engine: D3D CEE2, 4cyl, HK:74, S/N:10547301

Quick hitch

3:rd line

Standard bucket

Combi bucket

Forks, Code: 123456#

Tires: Alliance 14.5-20 MPT

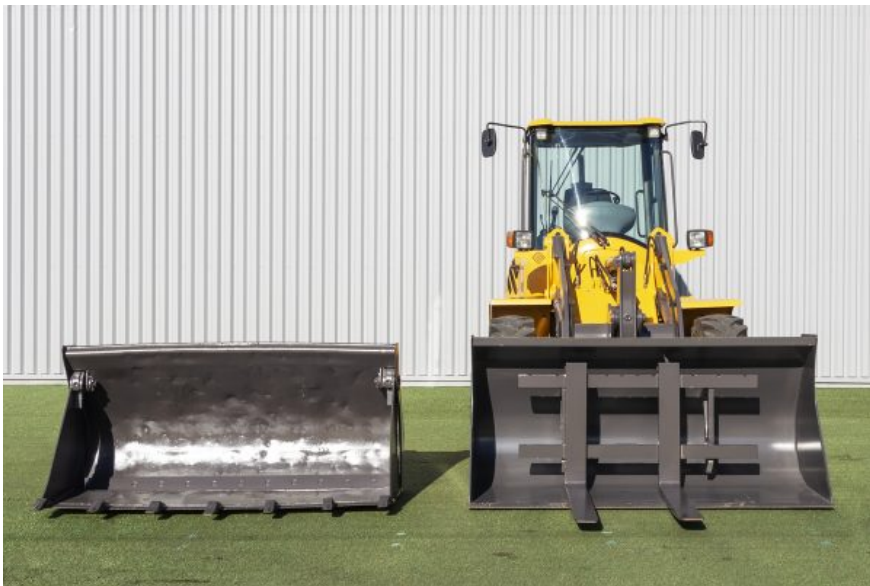
Equipment dimensions l/w/h: 4610x1930x2776mm

Country of origin: Germany

Placed: Landskrona, Sweden

<https://www.saxtorp.com/machines/machines-for-sale/volvo-l35b-z-2/>











Volvo Construction Equipment	
Volvo Construction Equipment GmbH & Co. KG D-54329 Konz, Germany	
ORDER No	2310084
VOLUME m ³	1,0
WIDTH mm	2000
WEIGHT kg	590
INDEX	